

Date

07/09/2022



Son Villa_FF
REV 01

Content

Content	1
Images	3

Product data sheets

Linea Light Group - Loro_Q Downlight 13W DC HC (1x LED-CXA022-BC)	6
Linea Light Group - Loro_R Downlight 8W DC HC (1x LED-CXA018-BC)	7

Site 1

Building 1

Luminaire list	8
----------------------	---

Site 1 - Building 1

Story 1

Room List / Light scene 1	9
Luminaire list	14
Calculation objects / Light scene 1	15

Site 1 - Building 1 - Story 1

Room 1

Summary / Light scene 1	18
Working plane (Room 1) / Light scene 1 / Perpendicular illuminance (adaptive)	20
ROOM 1 TABLE / Light scene 1 / Perpendicular illuminance	21
ROOM 1 CORRIDOR / Light scene 1 / Perpendicular illuminance	22

Site 1 - Building 1 - Story 1

Room 3

Summary / Light scene 1	23
Working plane (Room 3) / Light scene 1 / Perpendicular illuminance (adaptive)	25
ROOM 3 TABLE / Light scene 1 / Perpendicular illuminance	26
ROOM 3 CORRIDOR / Light scene 1 / Perpendicular illuminance	27

Site 1 - Building 1 - Story 1

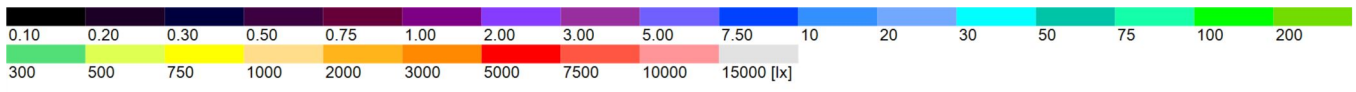
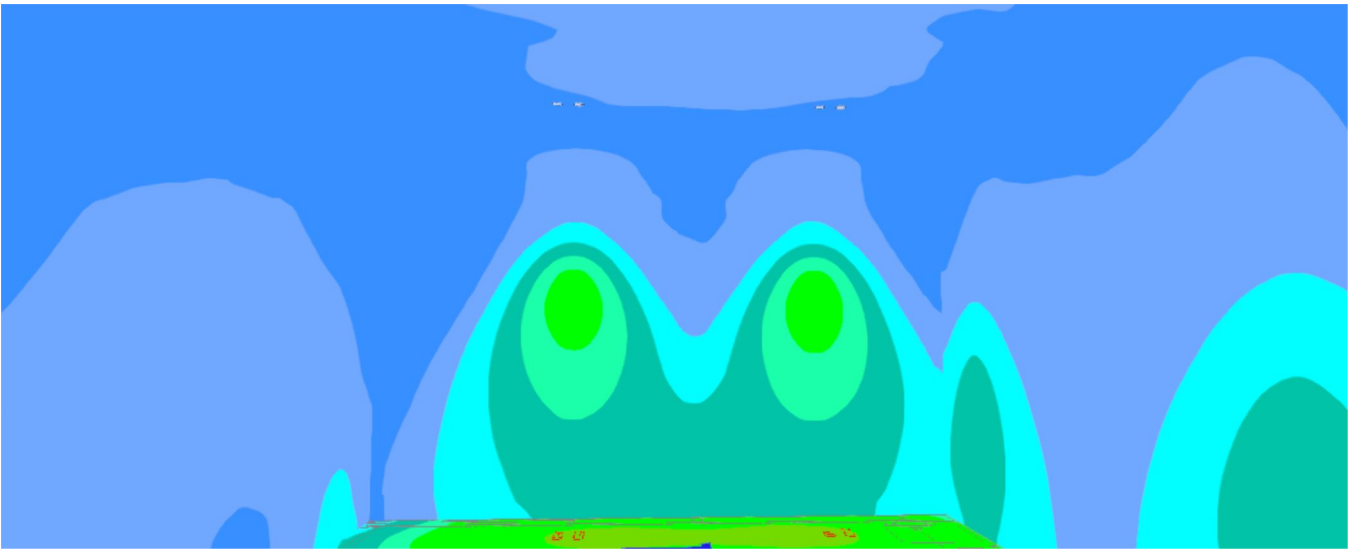
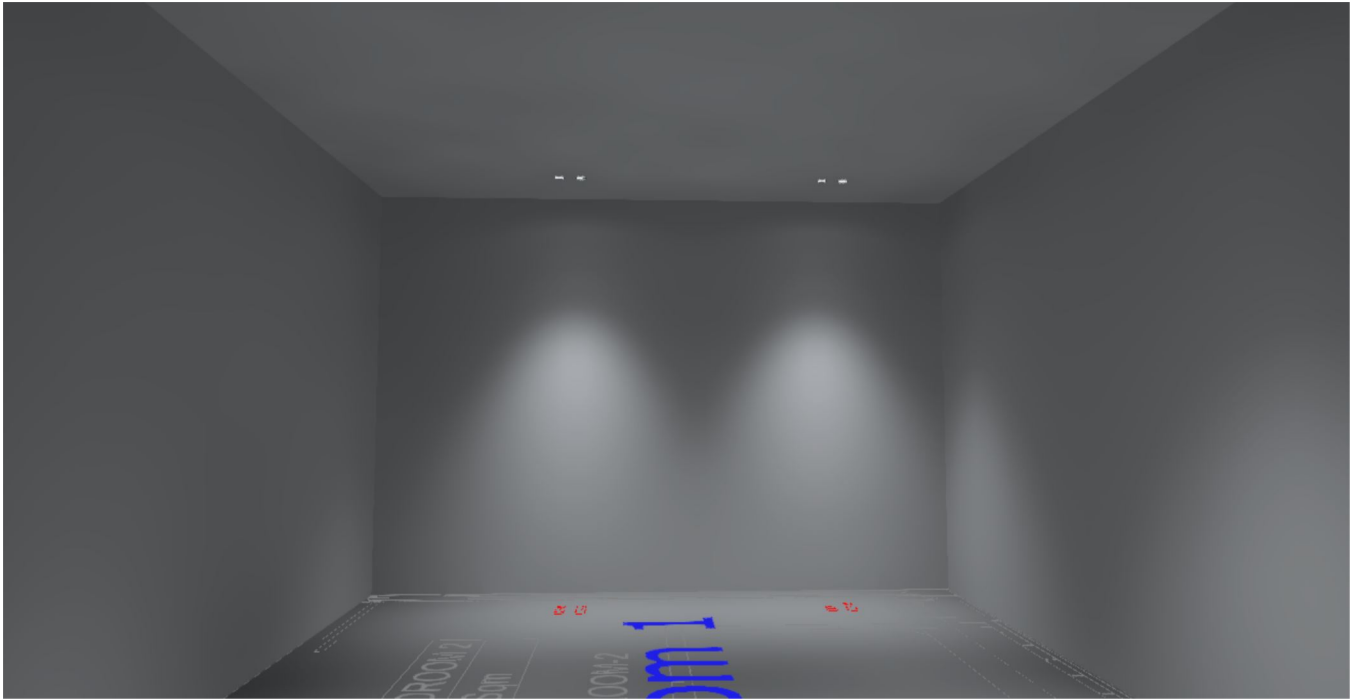
Room 4

Summary / Light scene 1	28
Working plane (Room 4) / Light scene 1 / Perpendicular illuminance (adaptive)	30

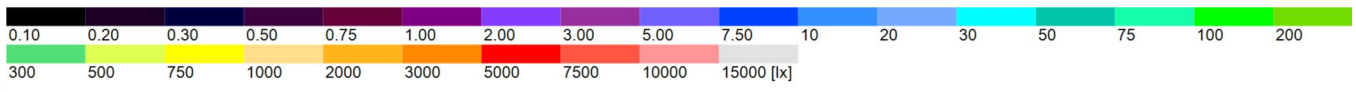
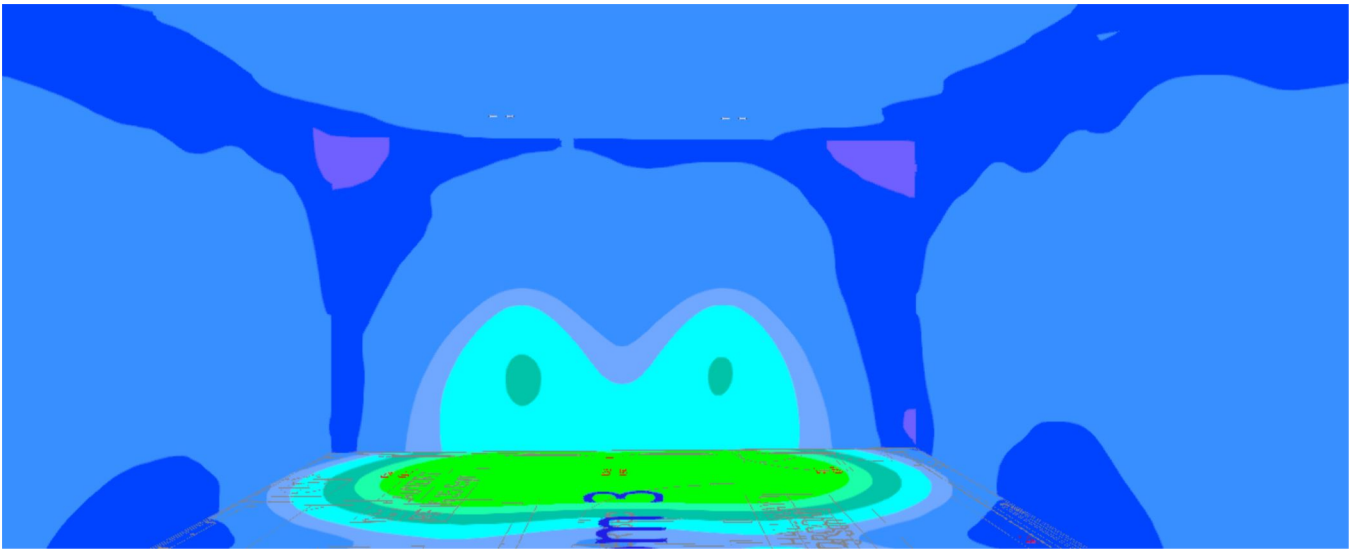
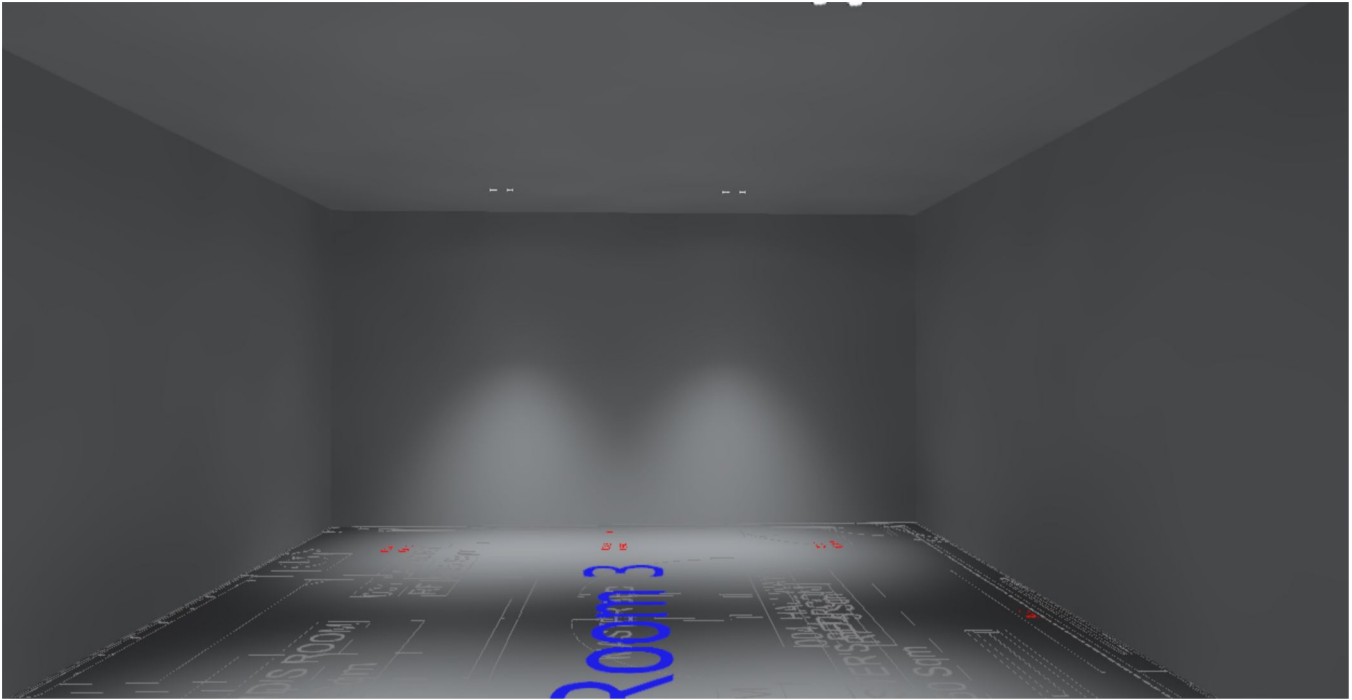
Content

Room 4 Table / Light scene 1 / Perpendicular illuminance	31
Room 4 Corridor / Light scene 1 / Perpendicular illuminance	32

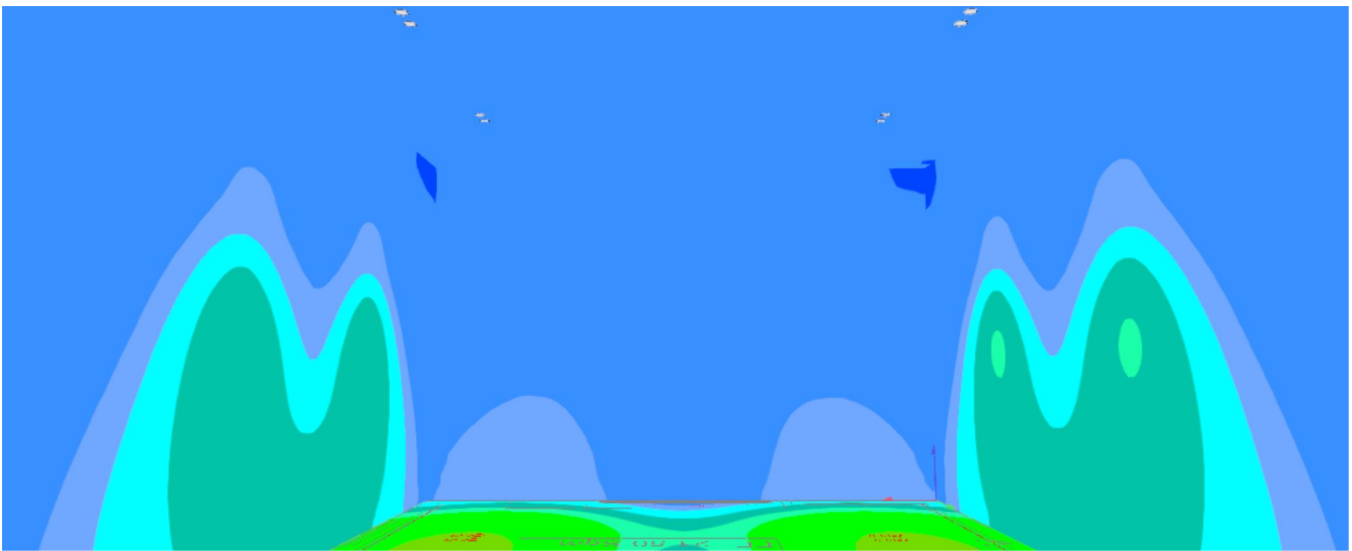
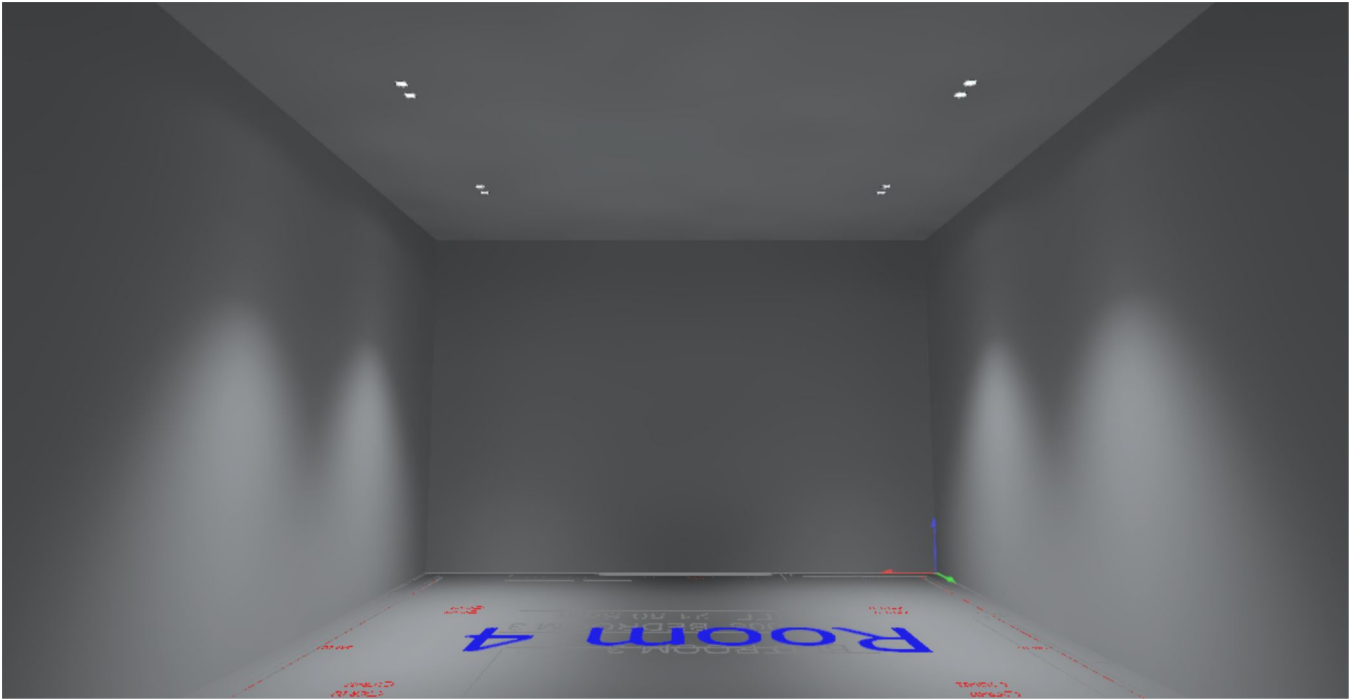
Bed Room 2



Master Bedroom



Bed Room 3

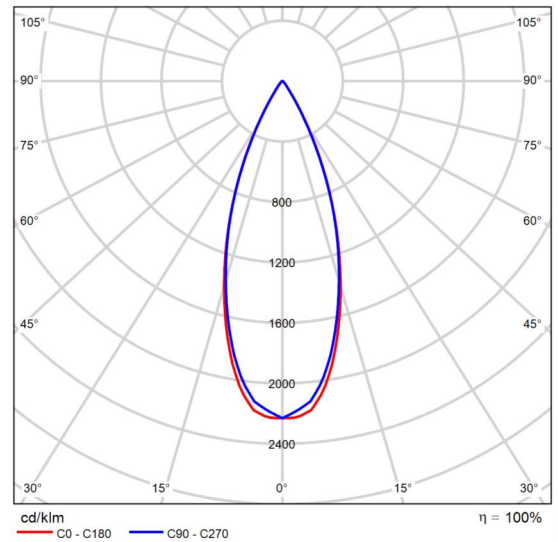


Product data sheet

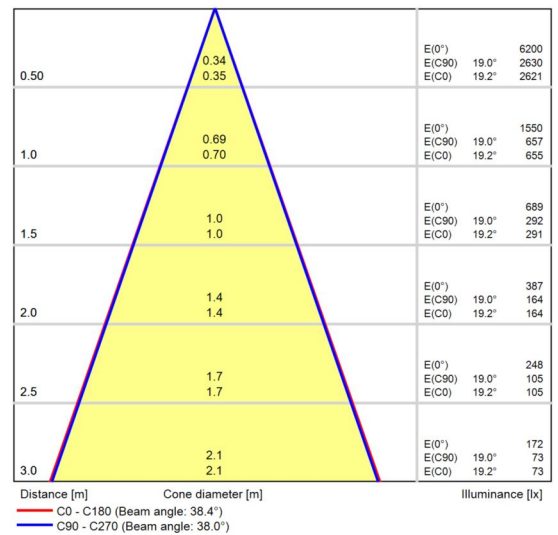
Linea Light Group - Loro_Q Downlight 13W DC HC



Article No.	80799W60
P	13.0 W
Φ_{Lamp}	695 lm
$\Phi_{Luminaire}$	695 lm
η	100.00 %
Luminous efficacy	53.4 lm/W
CCT	3000 K
CRI	92



Polar LDC



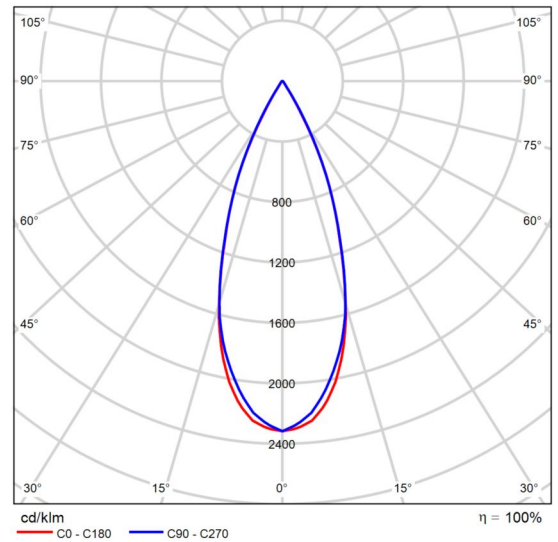
Cone diagram

Product data sheet

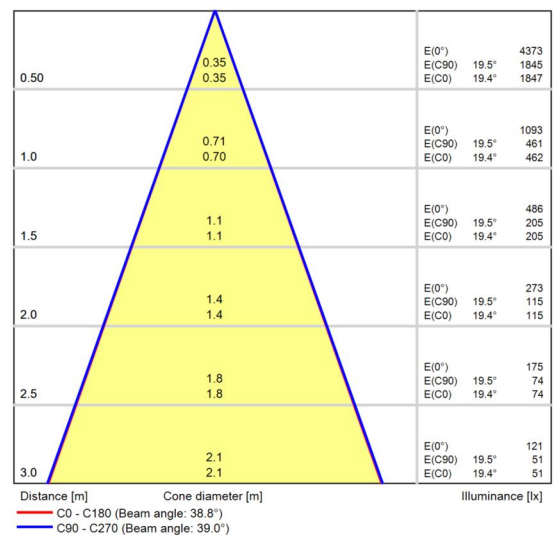
Linea Light Group - Loro_R Downlight 8W DC HC



Article No.	80791W60
P	8.0 W
Φ_{Lamp}	472 lm
$\Phi_{Luminaire}$	472 lm
η	100.00 %
Luminous efficacy	59.0 lm/W
CCT	3000 K
CRI	92



Polar LDC



Cone diagram

Building 1

Luminaire list

 Φ_{total}

32256 lm

 P_{total}

576.0 W

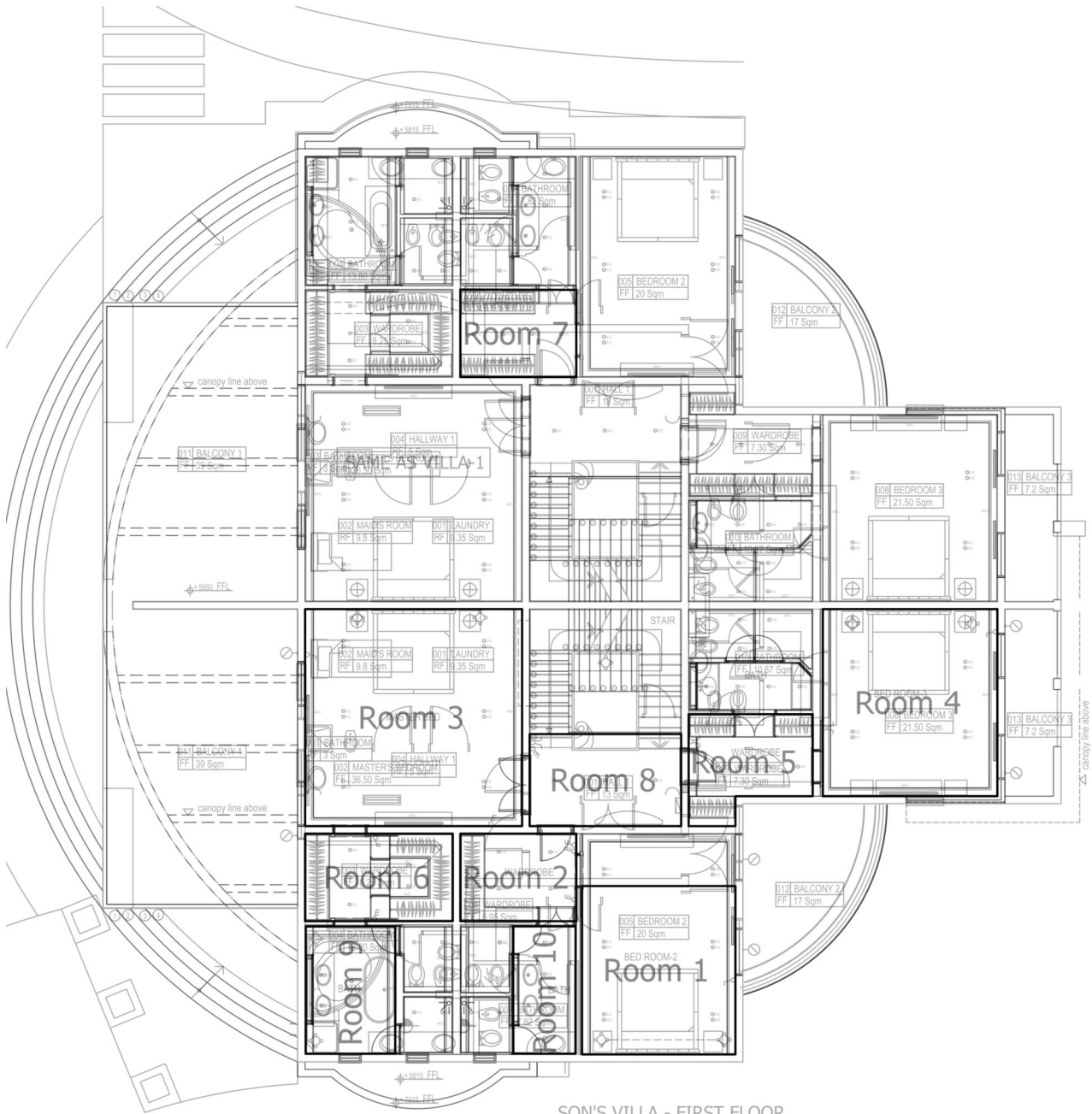
Luminous efficacy

56.0 lm/W

pcs.	Manufacturer	Article No.	Article name	P	Φ	Luminous efficacy
33	Linea Light Group	80791W60	Loro_R Downlight 8W DC HC	8.0 W	472 lm	59.0 lm/W
24	Linea Light Group	80799W60	Loro_Q Downlight 13W DC HC	13.0 W	695 lm	53.4 lm/W

Building 1 · Story 1 (Light scene 1)

Room List



SON'S VILLA - FIRST FLOOR
LIGHTING LAYOUT



Building 1 · Story 1 (Light scene 1)

Room List

Room 1

P_{total} 64.0 W	A_{Room} 18.46 m ²	Lighting power density 3.47 W/m ² = 1.93 W/m ² /100 lx (Room)	E_{perpendicular} (Working plane) 180 lx
------------------------------------	---	---	--

pcs.	Manufacturer	Article No.	Article name	P	Φ _{Luminaire}
8	Linea Light Group	80791W60	Loro_R Downlight 8W DC HC	8.0 W	472 lm

Room 2

P_{total} 52.0 W	A_{Room} 7.25 m ²	Lighting power density 7.17 W/m ² = 2.62 W/m ² /100 lx (Room)	E_{perpendicular} (Working plane) 274 lx
------------------------------------	--	---	--

pcs.	Manufacturer	Article No.	Article name	P	Φ _{Luminaire}
4	Linea Light Group	80799W60	Loro_Q Downlight 13W DC HC	13.0 W	695 lm

Room 3

P_{total} 64.0 W	A_{Room} 33.64 m ²	Lighting power density 1.90 W/m ² = 2.05 W/m ² /100 lx (Room)	E_{perpendicular} (Working plane) 93.0 lx
------------------------------------	---	---	---

pcs.	Manufacturer	Article No.	Article name	P	Φ _{Luminaire}
8	Linea Light Group	80791W60	Loro_R Downlight 8W DC HC	8.0 W	472 lm



Building 1 · Story 1 (Light scene 1)

Room List

Room 4

P_{total} 64.0 W	A_{Room} 23.32 m ²	Lighting power density 2.74 W/m ² = 2.14 W/m ² /100 lx (Room)	E_{perpendicular} (Working plane) 128 lx
------------------------------------	---	---	--

pcs.	Manufacturer	Article No.	Article name	P	Φ _{Luminaire}
8	Linea Light Group	80791W60	Loro_R Downlight 8W DC HC	8.0 W	472 lm

Room 5

P_{total} 52.0 W	A_{Room} 8.27 m ²	Lighting power density 6.29 W/m ² = 2.68 W/m ² /100 lx (Room)	E_{perpendicular} (Working plane) 234 lx
------------------------------------	--	---	--

pcs.	Manufacturer	Article No.	Article name	P	Φ _{Luminaire}
4	Linea Light Group	80799W60	Loro_Q Downlight 13W DC HC	13.0 W	695 lm

Room 6

P_{total} 65.0 W	A_{Room} 9.24 m ²	Lighting power density 7.03 W/m ² = 2.60 W/m ² /100 lx (Room)	E_{perpendicular} (Working plane) 270 lx
------------------------------------	--	---	--

pcs.	Manufacturer	Article No.	Article name	P	Φ _{Luminaire}
5	Linea Light Group	80799W60	Loro_Q Downlight 13W DC HC	13.0 W	695 lm

Building 1 · Story 1 (Light scene 1)

Room List

Room 7

P_{total} 52.0 W	A_{Room} 7.24 m ²	Lighting power density 7.18 W/m ² = 2.71 W/m ² /100 lx (Room)	$\bar{E}_{perpendicular}$ (Working plane) 266 lx
-----------------------	-----------------------------------	--	---

pcs.	Manufacturer	Article No.	Article name	P	$\Phi_{Luminaire}$
4	Linea Light Group	80799W60	Loro_Q Downlight 13W DC HC	13.0 W	695 lm

Room 8

P_{total} 39.0 W	A_{Room} 9.96 m ²	Lighting power density 3.91 W/m ² = 2.47 W/m ² /100 lx (Room)	$\bar{E}_{perpendicular}$ (Working plane) 159 lx
-----------------------	-----------------------------------	--	---

pcs.	Manufacturer	Article No.	Article name	P	$\Phi_{Luminaire}$
3	Linea Light Group	80799W60	Loro_Q Downlight 13W DC HC	13.0 W	695 lm

Room 9

P_{total} 40.0 W	A_{Room} 8.11 m ²	Lighting power density 4.93 W/m ² = 2.38 W/m ² /100 lx (Room)	$\bar{E}_{perpendicular}$ (Working plane) 208 lx
-----------------------	-----------------------------------	--	---

pcs.	Manufacturer	Article No.	Article name	P	$\Phi_{Luminaire}$
5	Linea Light Group	80791W60	Loro_R Downlight 8W DC HC	8.0 W	472 lm



Building 1 · Story 1 (Light scene 1)

Room List

Room 10

P_{total} 32.0 W	A_{Room} 5.67 m ²	Lighting power density 5.65 W/m ² = 2.60 W/m ² /100 lx (Room)	$\bar{E}_{perpendicular}$ (Working plane) 217 lx
-----------------------	-----------------------------------	--	---

pcs.	Manufacturer	Article No.	Article name	P	$\Phi_{Luminaire}$
4	Linea Light Group	80791W60	Loro_R Downlight 8W DC HC	8.0 W	472 lm

Building 1 · Story 1

Luminaire list

 Φ_{total}

32256 lm

 P_{total}

576.0 W

Luminous efficacy

56.0 lm/W

pcs.	Manufacturer	Article No.	Article name	P	Φ	Luminous efficacy
33	Linea Light Group	80791W60	Loro_R Downlight 8W DC HC	8.0 W	472 lm	59.0 lm/W
24	Linea Light Group	80799W60	Loro_Q Downlight 13W DC HC	13.0 W	695 lm	53.4 lm/W

Building 1 · Story 1 (Light scene 1) Calculation objects



SON'S VILLA - FIRST FLOOR
LIGHTING LAYOUT

Building 1 · Story 1 (Light scene 1)

Calculation objects

Working planes

Properties	\bar{E}	E_{min}	E_{max}	g_1	g_2	Index
Working plane (Room 1) Perpendicular illuminance (adaptive) Height: 0.800 m, Wall zone: 0.000 m	180 lx	20.8 lx	408 lx	0.12	0.051	WP1
Working plane (Room 2) Perpendicular illuminance (adaptive) Height: 0.800 m, Wall zone: 0.000 m	274 lx	47.6 lx	436 lx	0.17	0.11	WP2
Working plane (Room 3) Perpendicular illuminance (adaptive) Height: 0.800 m, Wall zone: 0.000 m	93.0 lx	7.62 lx	335 lx	0.082	0.023	WP3
Working plane (Room 4) Perpendicular illuminance (adaptive) Height: 0.800 m, Wall zone: 0.000 m	128 lx	11.7 lx	340 lx	0.091	0.034	WP4
Working plane (Room 5) Perpendicular illuminance (adaptive) Height: 0.800 m, Wall zone: 0.000 m	234 lx	37.3 lx	450 lx	0.16	0.083	WP5
Working plane (Room 6) Perpendicular illuminance (adaptive) Height: 0.800 m, Wall zone: 0.000 m	270 lx	39.4 lx	494 lx	0.15	0.080	WP6
Working plane (Room 7) Perpendicular illuminance (adaptive) Height: 0.800 m, Wall zone: 0.000 m	266 lx	60.6 lx	473 lx	0.23	0.13	WP7
Working plane (Room 8) Perpendicular illuminance (adaptive) Height: 0.800 m, Wall zone: 0.000 m	159 lx	32.3 lx	282 lx	0.20	0.11	WP8
Working plane (Room 9) Perpendicular illuminance (adaptive) Height: 0.800 m, Wall zone: 0.000 m	208 lx	30.8 lx	430 lx	0.15	0.072	WP9
Working plane (Room 10) Perpendicular illuminance (adaptive) Height: 0.800 m, Wall zone: 0.000 m	217 lx	85.6 lx	316 lx	0.39	0.27	WP10

Building 1 · Story 1 (Light scene 1)

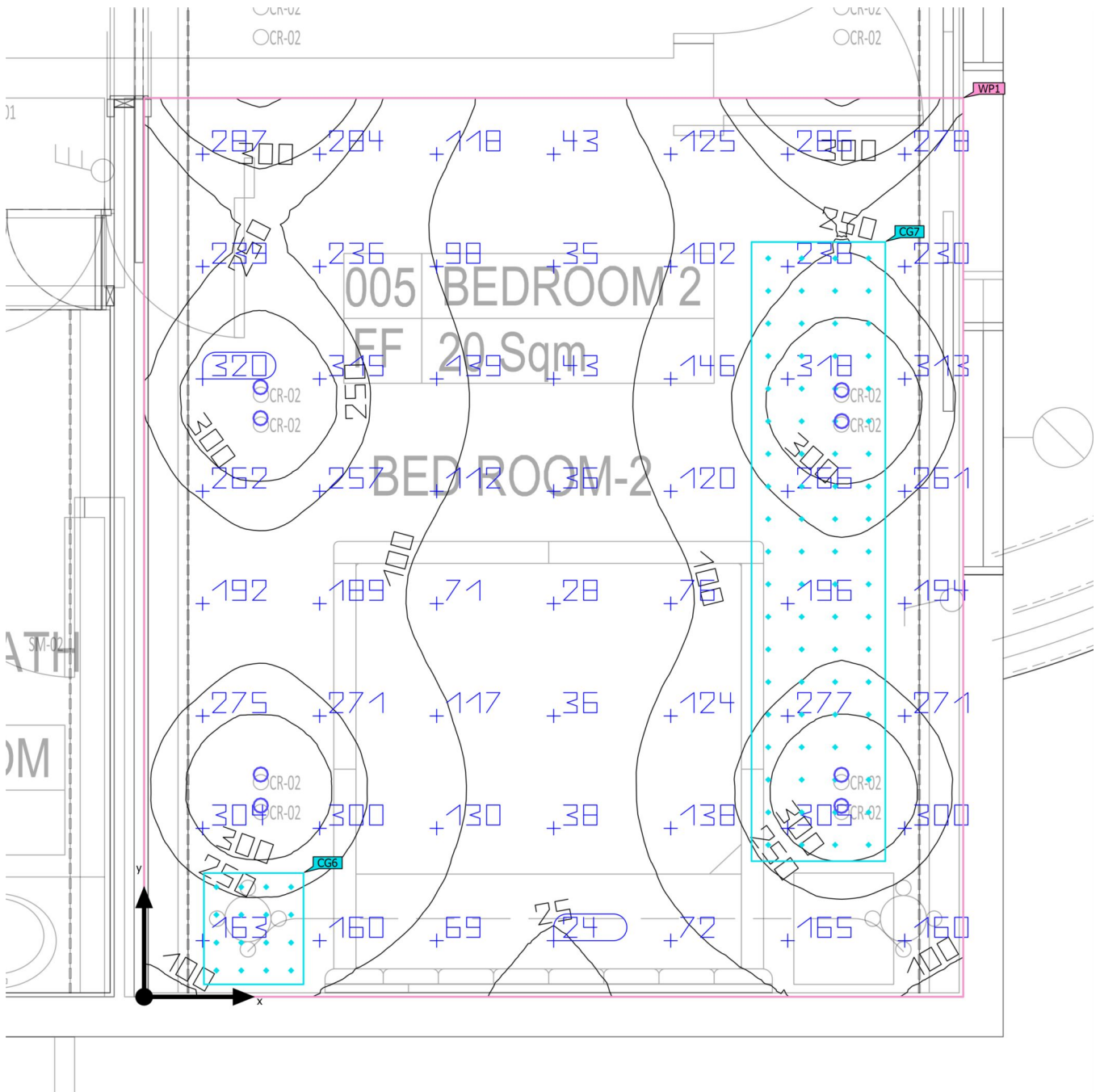
Calculation objects

Calculation surfaces

Properties	\bar{E}	E_{min}	E_{max}	g_1	g_2	Index
Calculation surface 1 Perpendicular illuminance Height: 0.800 m	260 lx	208 lx	301 lx	0.80	0.69	CG1
Room 4 Table Perpendicular illuminance Height: 0.750 m	41.8 lx	18.2 lx	75.3 lx	0.44	0.24	CG2
Room 4 Corridor Perpendicular illuminance Height: 0.000 m	184 lx	95.4 lx	226 lx	0.52	0.42	CG3
ROOM 3 TABLE Perpendicular illuminance Height: 0.750 m	18.1 lx	9.47 lx	37.2 lx	0.52	0.25	CG4
ROOM 3 CORRIDOR Perpendicular illuminance Height: 0.000 m	148 lx	47.3 lx	198 lx	0.32	0.24	CG5
ROOM 1 TABLE Perpendicular illuminance Height: 0.800 m	196 lx	128 lx	266 lx	0.65	0.48	CG6
ROOM 1 CORRIDOR Perpendicular illuminance Height: 0.000 m	213 lx	180 lx	241 lx	0.85	0.75	CG7

Building 1 · Story 1 · Bed Room 2 (Light scene 1)

Summary



Building 1 · Story 1 · Bed Room 2 (Light scene 1)

Summary

Results

	Symbol	Calculated	Index
Working plane	$\bar{E}_{\text{perpendicular}}$	180 lx	WP1
	g_1	0.12	WP1

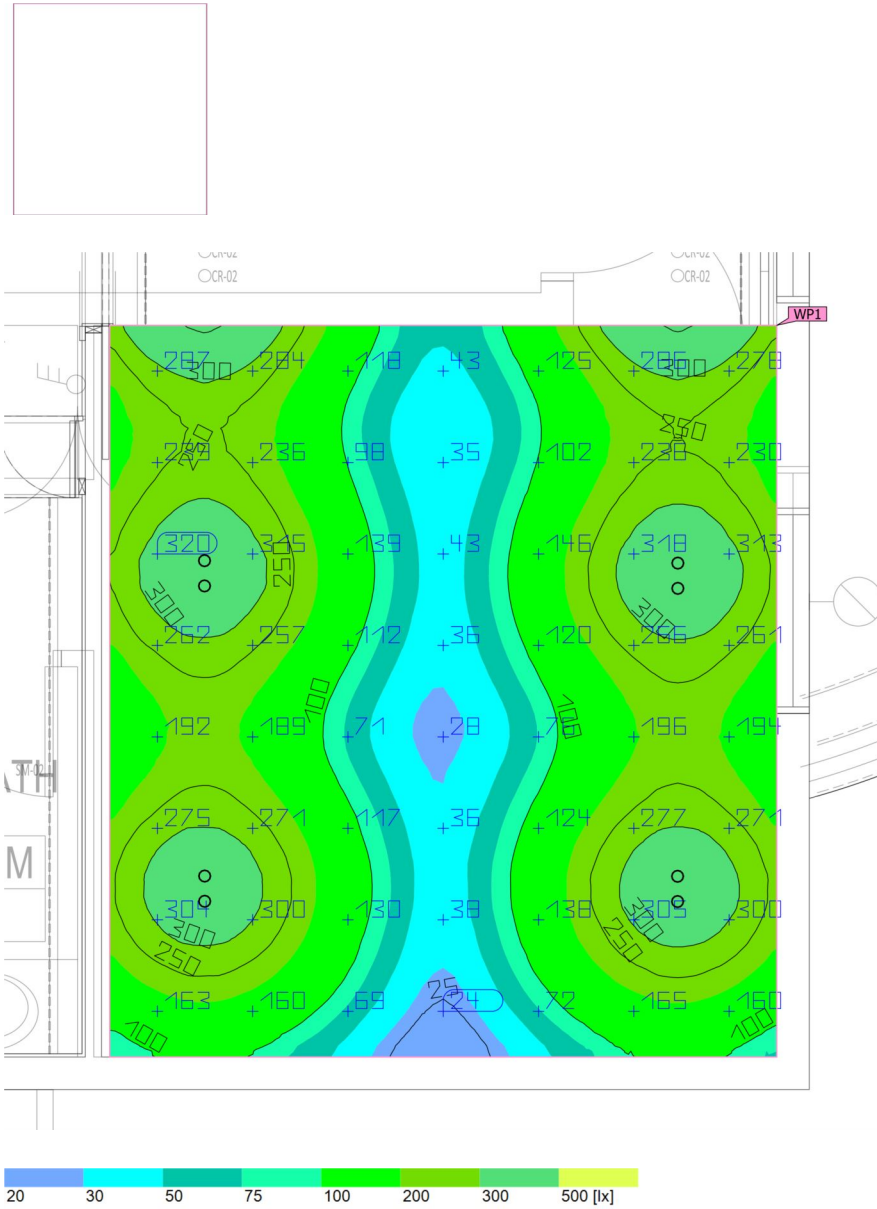
Utilization profile: DIALux presetting, Standard (office)

Luminaire list

pcs.	Manufacturer	Article No.	Article name	P	Φ	Luminous efficacy
8	Linea Light Group	80791W60	Loro_R Downlight 8W DC HC	8.0 W	472 lm	59.0 lm/W

Building 1 · Story 1 · Bed Room 2 (Light scene 1)

Working plane (Bed Room 2)

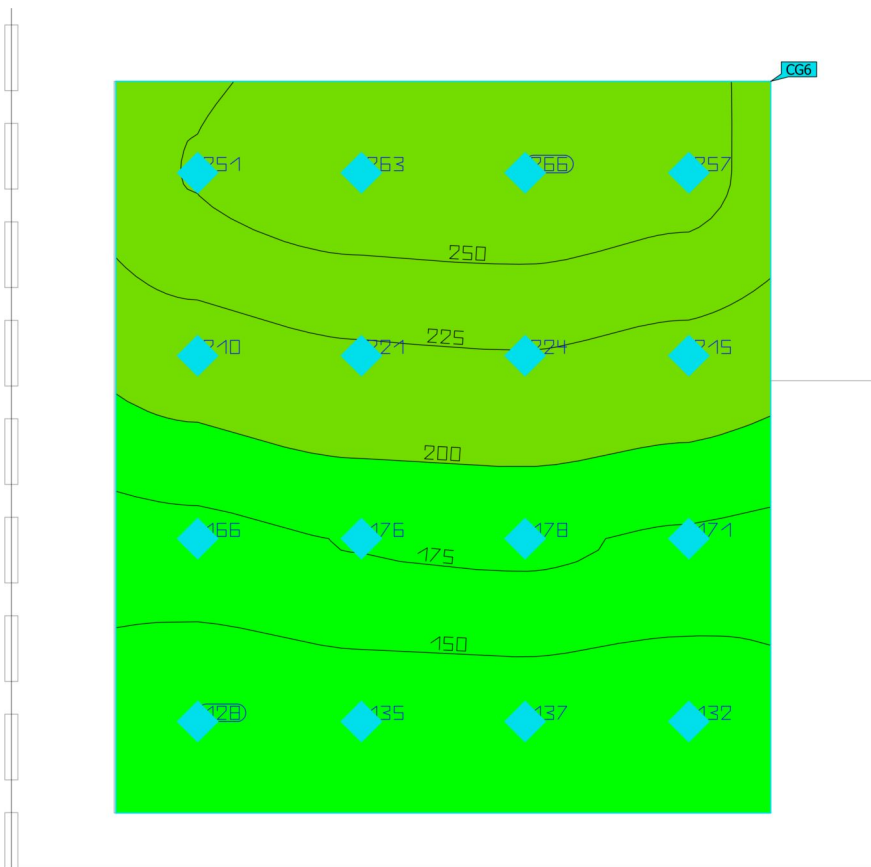


Properties	\bar{E}	E_{min}	E_{max}	g_1	g_2	Index
Working plane (Room 1) Perpendicular illuminance (adaptive) Height: 0.800 m, Wall zone: 0.000 m	180 lx	20.8 lx	408 lx	0.12	0.051	WP1

Utilization profile: DIALux presetting, Standard (office)

Building 1 · Story 1 · Bed Room 2 (Light scene 1)

Bed Room 2 TABLE

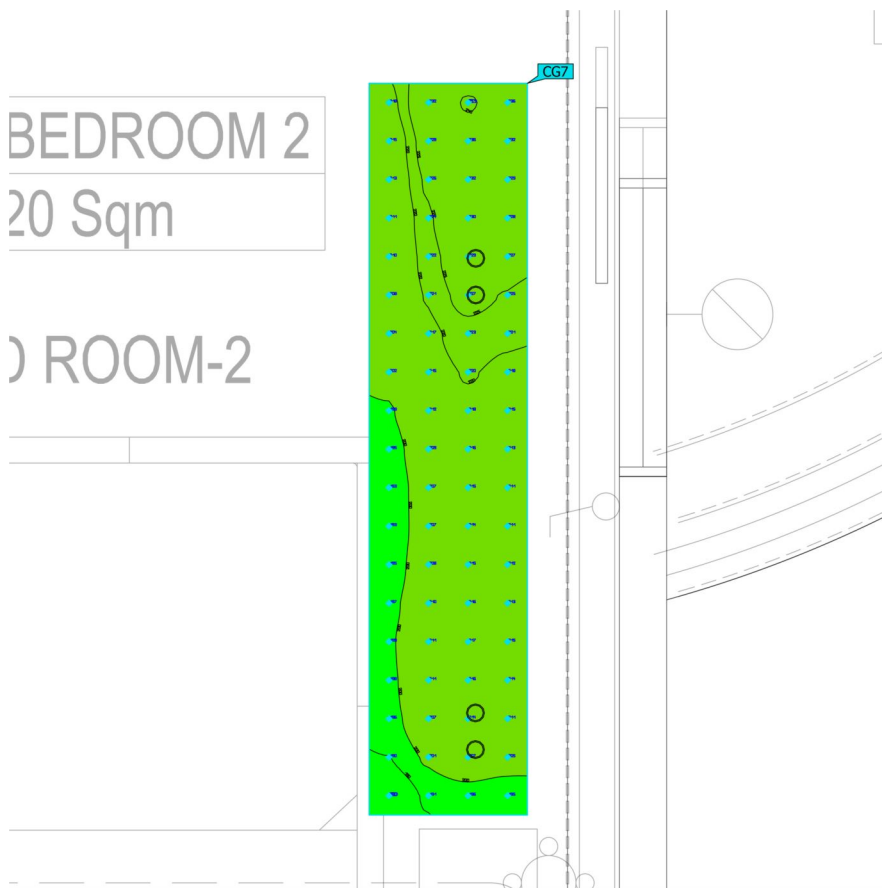
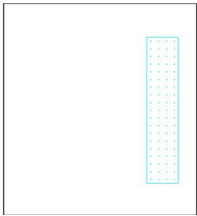


Properties	\bar{E}	E_{min}	E_{max}	g_1	g_2	Index
ROOM 1 TABLE Perpendicular illuminance Height: 0.800 m	196 lx	128 lx	266 lx	0.65	0.48	CG6

Utilization profile: DIALux presetting, Standard (office)

Building 1 · Story 1 · Bed Room 2 (Light scene 1)

Bed Room 2 CORRIDOR

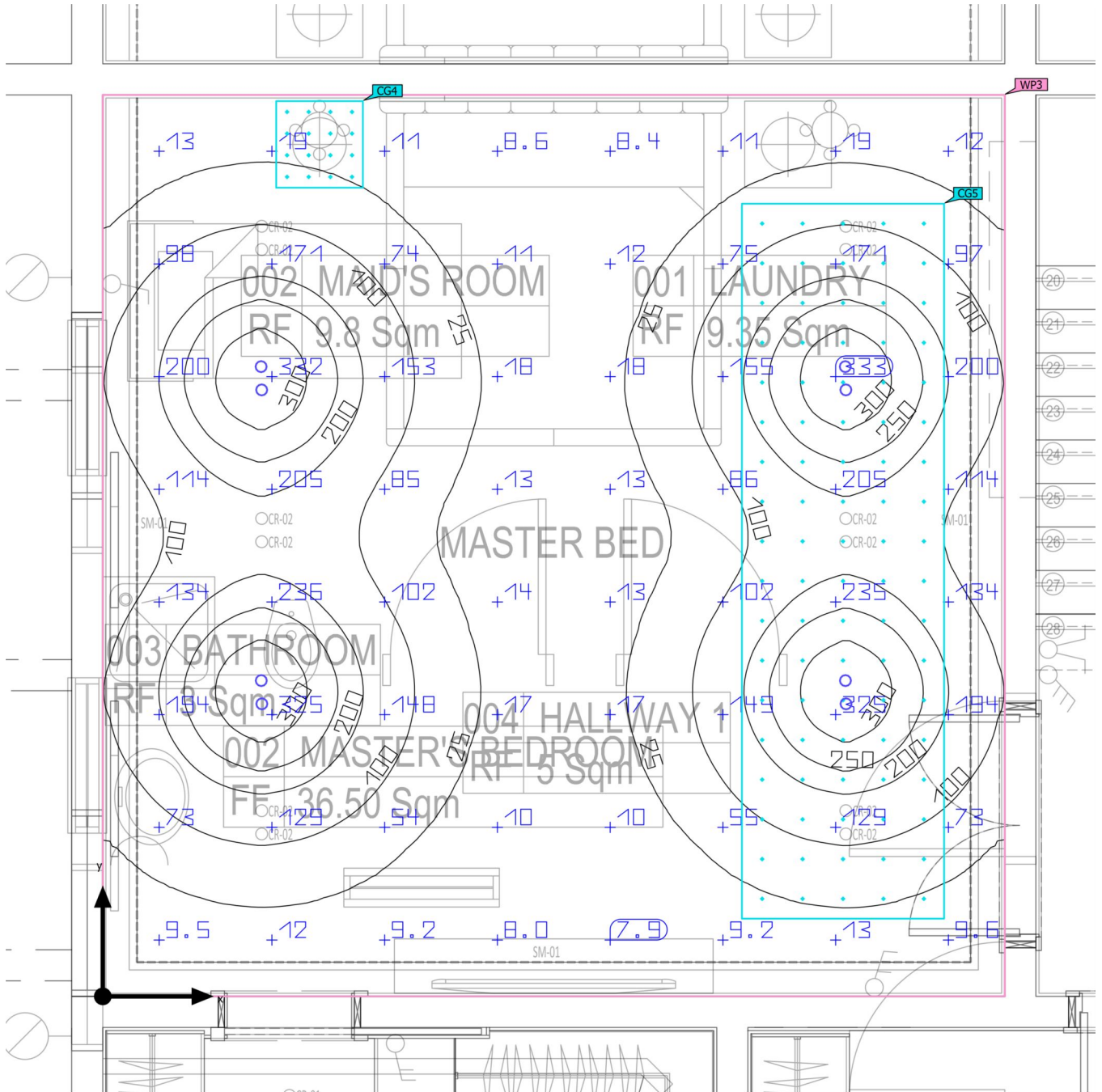


Properties	\bar{E}	E_{min}	E_{max}	g_1	g_2	Index
ROOM 1 CORRIDOR Perpendicular illuminance Height: 0.000 m	213 lx	180 lx	241 lx	0.85	0.75	CG7

Utilization profile: DIALux presetting, Standard (office)

Building 1 · Story 1 · Master Bed (Light scene 1)

Summary



Building 1 · Story 1 · Master Bed (Light scene 1)

Summary

Results

	Symbol	Calculated	Index
Working plane	$\bar{E}_{\text{perpendicular}}$	93.0 lx	WP3
	g_1	0.082	WP3

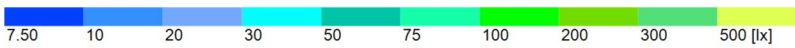
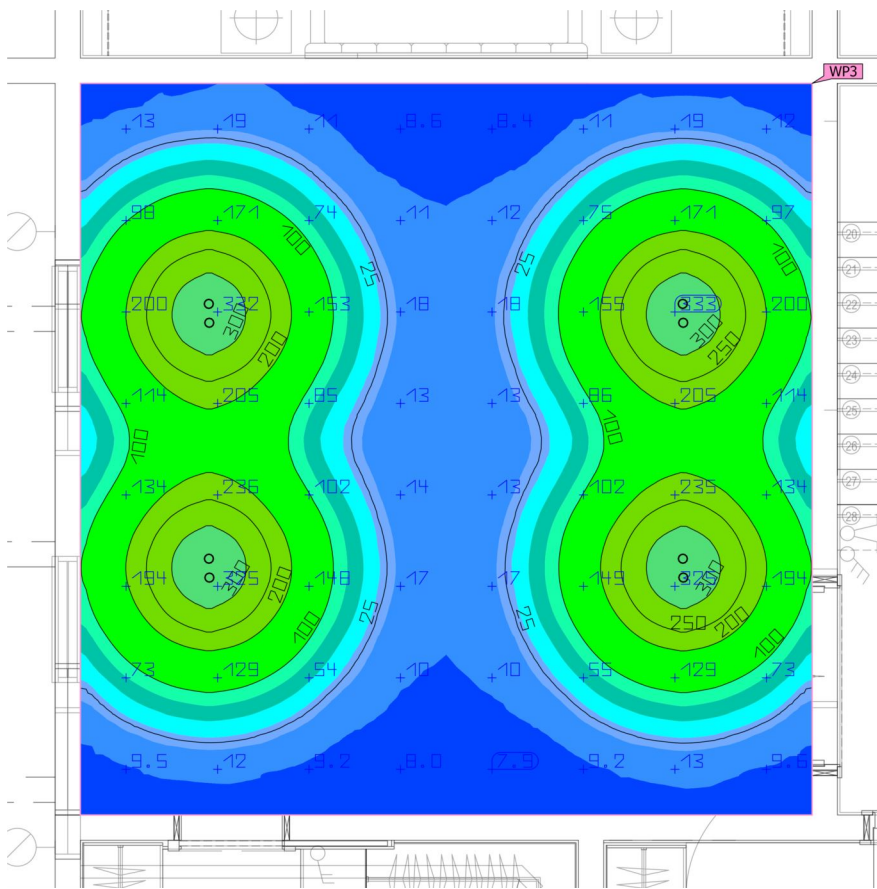
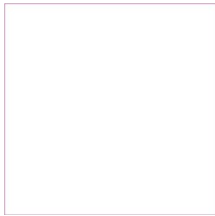
Utilization profile: DIALux presetting, Standard (office)

Luminaire list

pcs.	Manufacturer	Article No.	Article name	P	Φ	Luminous efficacy
8	Linea Light Group	80791W60	Loro_R Downlight 8W DC HC	8.0 W	472 lm	59.0 lm/W

Building 1 · Story 1 · Master Bed (Light scene 1)

Working plane (Master Bed)

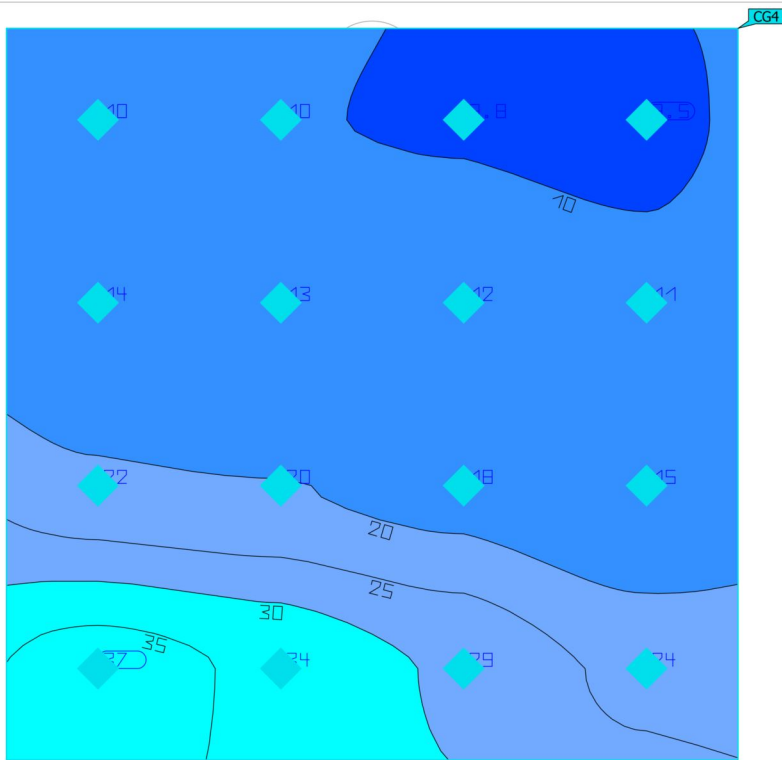
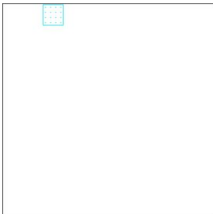


Properties	\bar{E}	E_{min}	E_{max}	g_1	g_2	Index
Working plane (Room 3) Perpendicular illuminance (adaptive) Height: 0.800 m, Wall zone: 0.000 m	93.0 lx	7.62 lx	335 lx	0.082	0.023	WP3

Utilization profile: DIALux presetting, Standard (office)

Building 1 · Story 1 · Master Bed (Light scene 1)

Master Bed TABLE

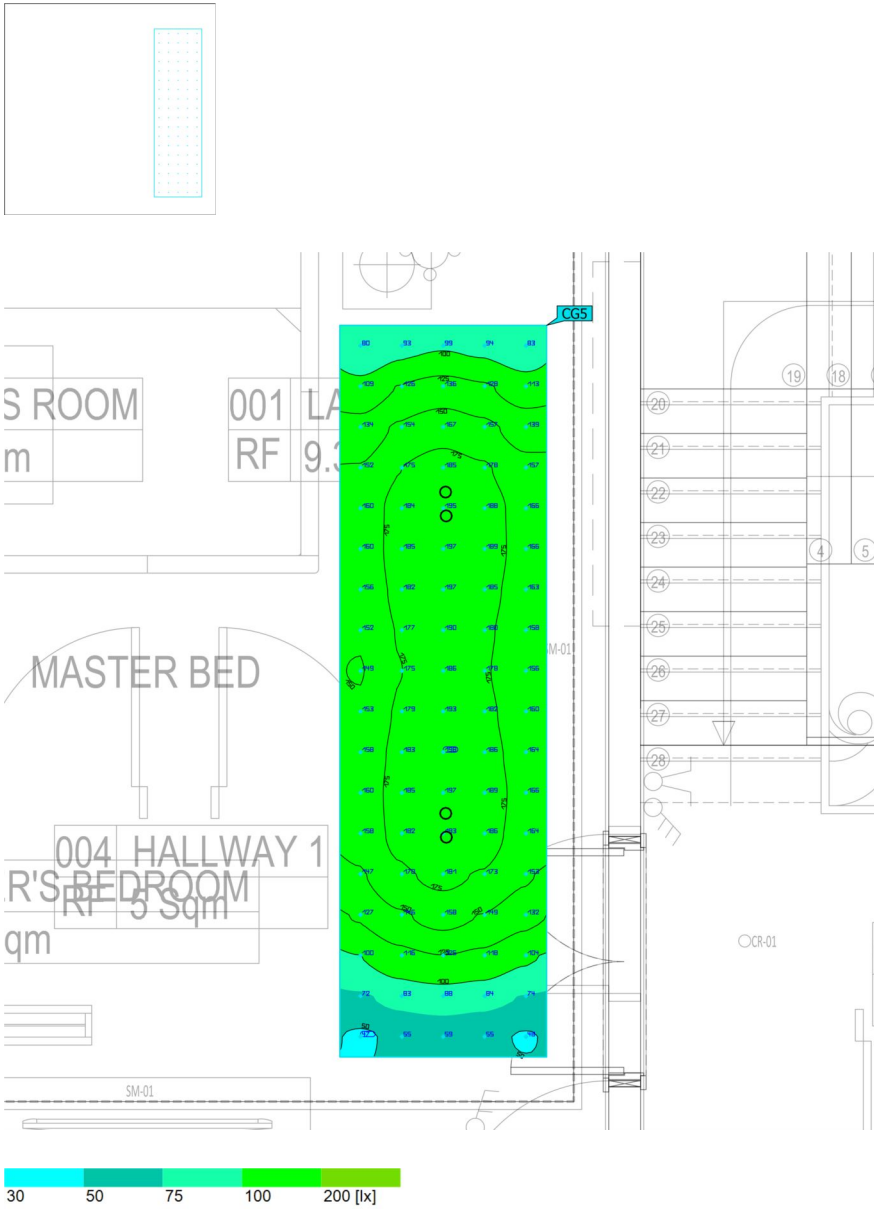


Properties	\bar{E}	E_{min}	E_{max}	g_1	g_2	Index
ROOM 3 TABLE Perpendicular illuminance Height: 0.750 m	18.1 lx	9.47 lx	37.2 lx	0.52	0.25	CG4

Utilization profile: DIALux presetting, Standard (office)

Building 1 · Story 1 · Master Bed (Light scene 1)

Master Bed CORRIDOR

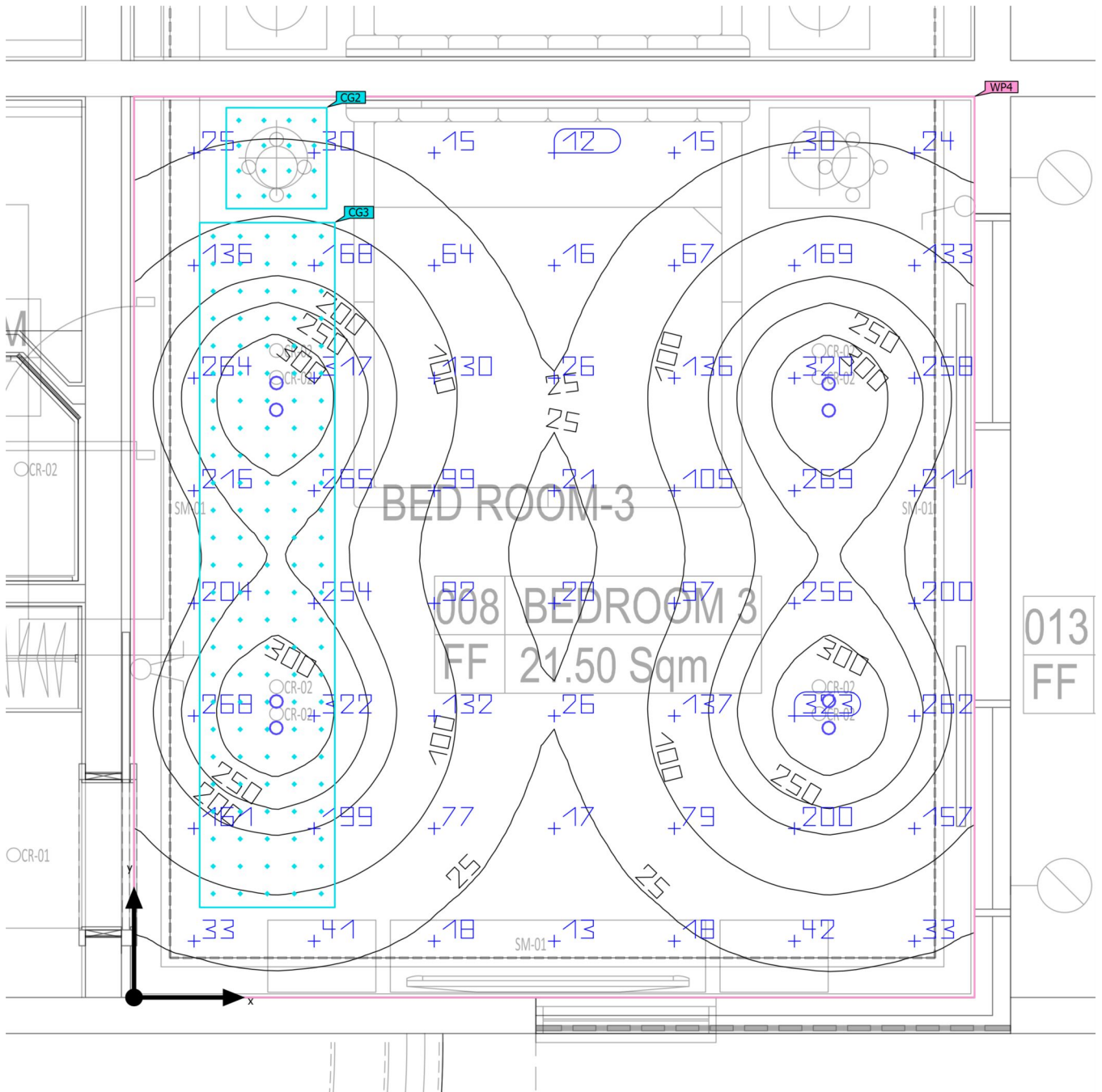


Properties	\bar{E}	E_{min}	E_{max}	g_1	g_2	Index
ROOM 3 CORRIDOR Perpendicular illuminance Height: 0.000 m	148 lx	47.3 lx	198 lx	0.32	0.24	CG5

Utilization profile: DIALux presetting, Standard (office)

Building 1 · Story 1 · Bed Room 3 (Light scene 1)

Summary



Building 1 · Story 1 · Bed Room 3 (Light scene 1)

Summary

Results

	Symbol	Calculated	Index
Working plane	$\bar{E}_{\text{perpendicular}}$	128 lx	WP4
	g_1	0.091	WP4

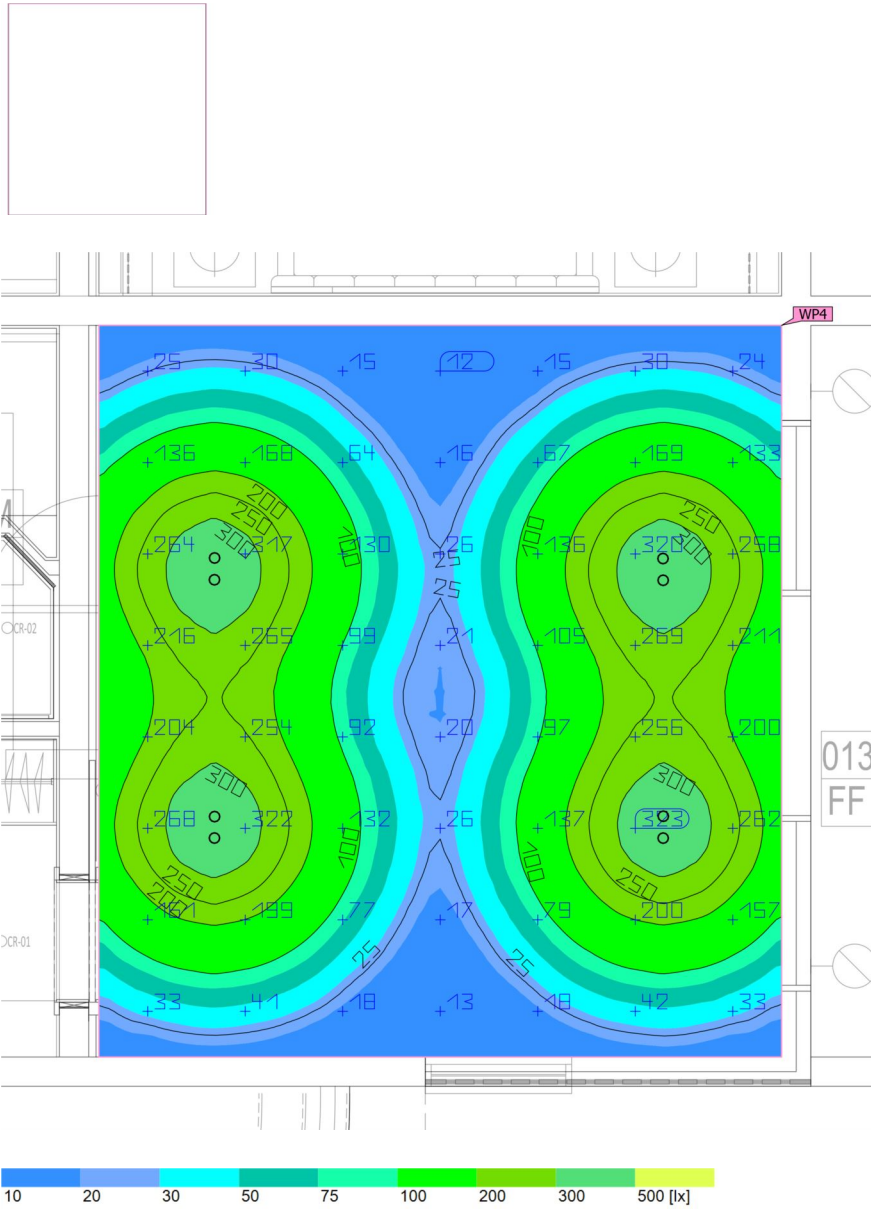
Utilization profile: DIALux presetting, Standard (office)

Luminaire list

pcs.	Manufacturer	Article No.	Article name	P	Φ	Luminous efficacy
8	Linea Light Group	80791W60	Loro_R Downlight 8W DC HC	8.0 W	472 lm	59.0 lm/W

Building 1 · Story 1 · Bed Room 3(Light scene 1)

Working plane (Bed Room 3)

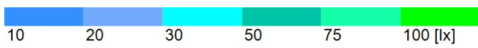
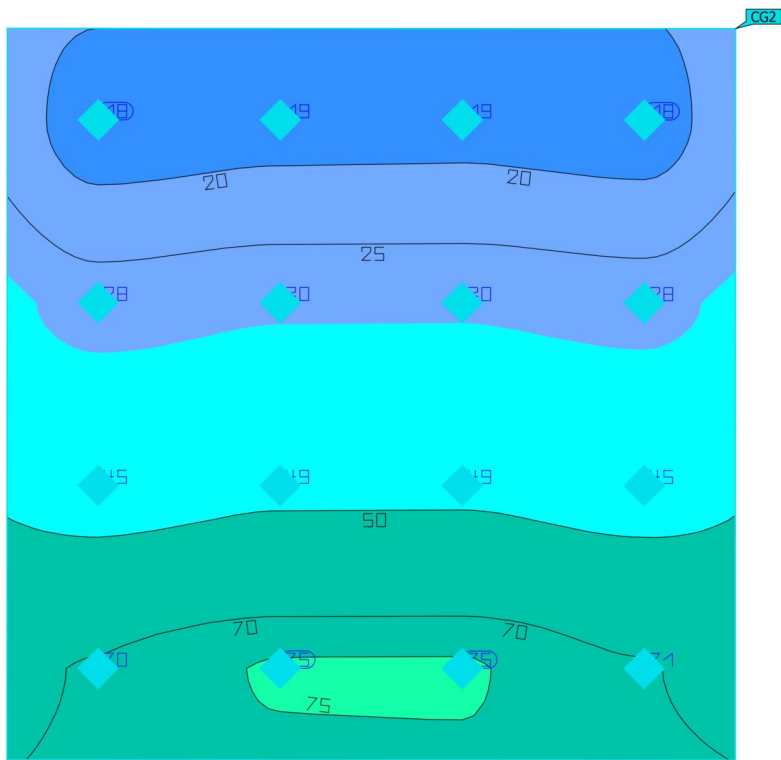
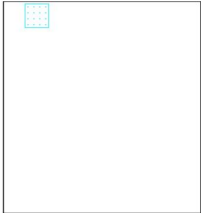


Properties	\bar{E}	E_{min}	E_{max}	g_1	g_2	Index
Working plane (Room 4) Perpendicular illuminance (adaptive) Height: 0.800 m, Wall zone: 0.000 m	128 lx	11.7 lx	340 lx	0.091	0.034	WP4

Utilization profile: DIALux presetting, Standard (office)

Building 1 · Story 1 · Bed Room 3 (Light scene 1)

Bed Room 3 Table

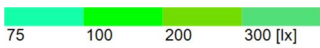
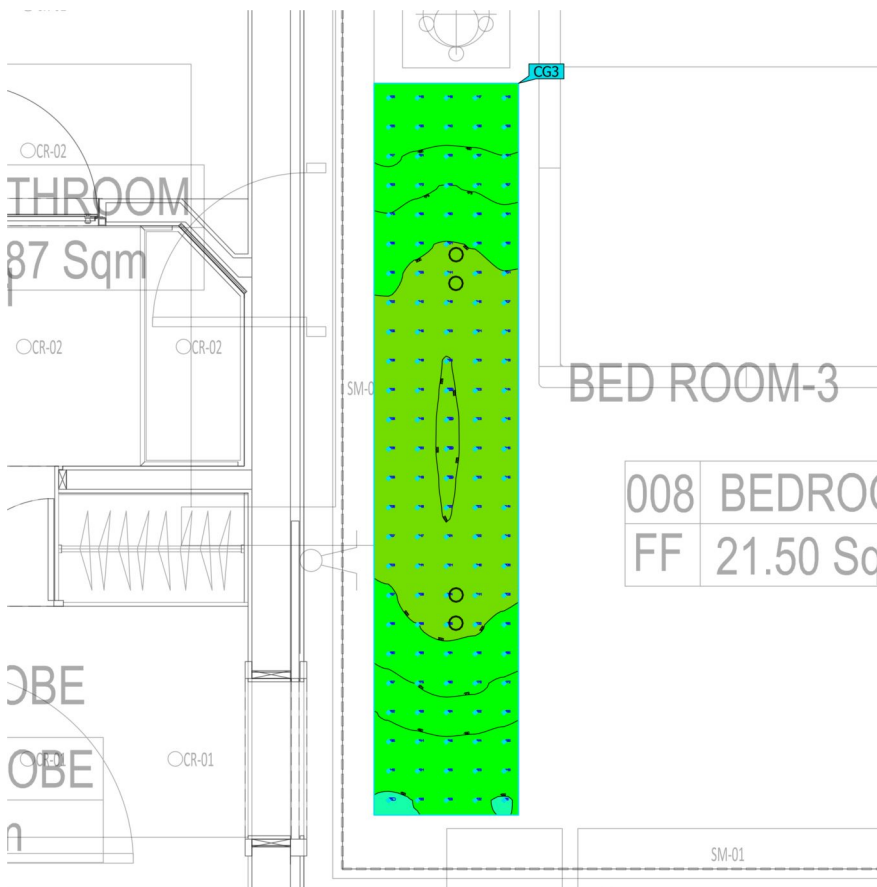
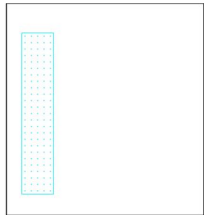


Properties	\bar{E}	E_{min}	E_{max}	g_1	g_2	Index
Room 4 Table Perpendicular illuminance Height: 0.750 m	41.8 lx	18.2 lx	75.3 lx	0.44	0.24	CG2

Utilization profile: DIALux presetting, Standard (office)

Building 1 · Story 1 · Bed Room 3 (Light scene 1)

Bed Room 3 Corridor



Properties	\bar{E}	E_{min}	E_{max}	g_1	g_2	Index
Room 4 Corridor Perpendicular illuminance Height: 0.000 m	184 lx	95.4 lx	226 lx	0.52	0.42	CG3

Utilization profile: DIALux presetting, Standard (office)